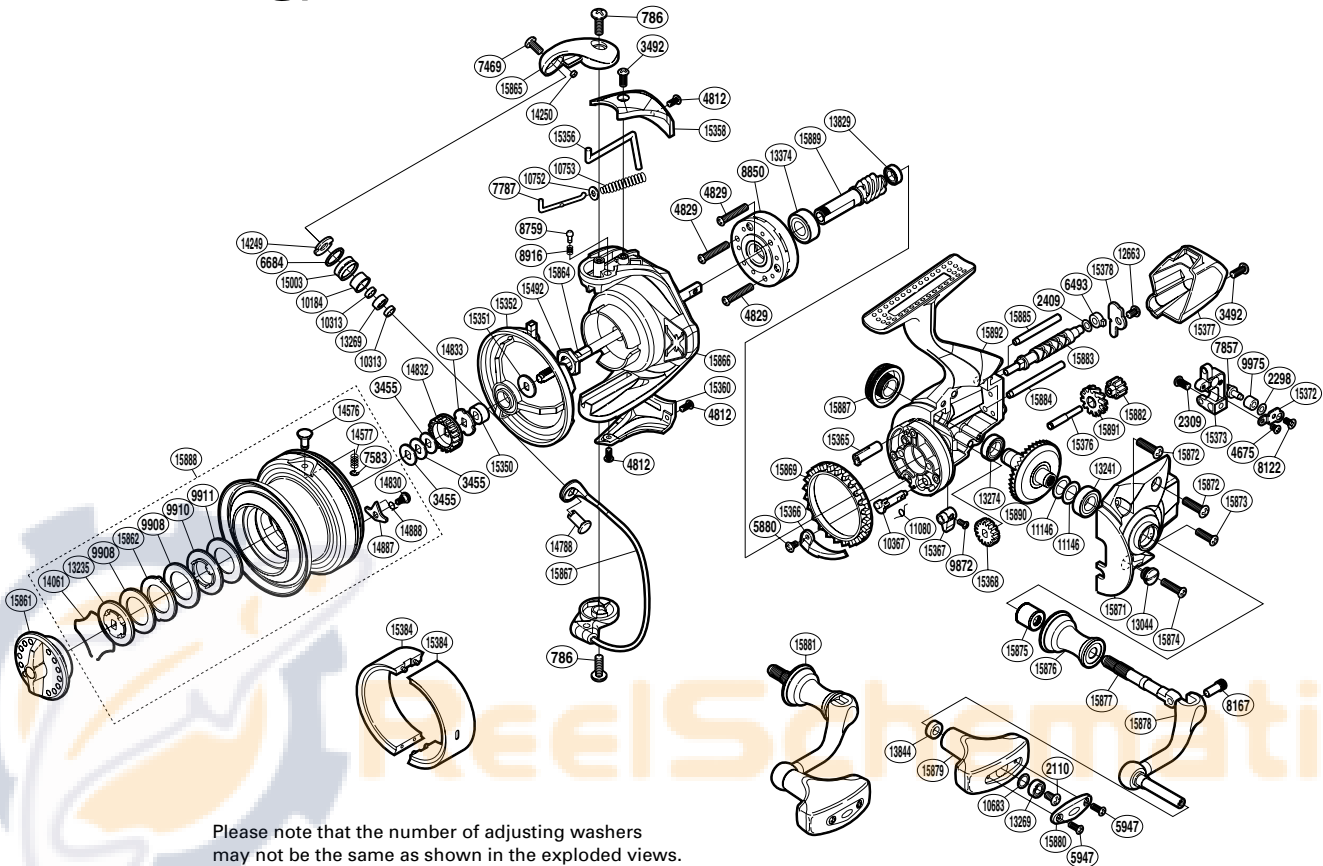


SHIMANO

AR-C
AERO CI4+

SA-RB

ARCARCI4+4000XG



Please note that the number of adjusting washers may not be the same as shown in the exploded views. (Adjustment will vary with each individual product.)

(51SE31H043G)

| Part No. | Description | Part No. | Description | Part No. | Description |
|----------|-----------------------------|----------|--------------------------|----------|--------------------------------|
| RD 0786 | Screw | RD13044 | Oil Cap | RD15862 | Eared Washer |
| RD 2110 | Screw | RD13235 | Key Washer | RD15864 | Main Shaft |
| RD 2298 | Spacer | RD13241 | Ball Bearing | RD15865 | Bail Arm |
| RD 2309 | Screw | RD13269 | Ball Bearing | RD15866 | Rotor |
| RD 2409 | Spacer | RD13274 | Ball Bearing | RD15867 | Bail Assembly |
| RD 3455 | Spool Washer | RD13374 | Ball Bearing | RD15869 | Friction Ring |
| RD 3492 | Screw | RD13829 | Ball Bearing | RD15871 | Side Cover |
| RD 4675 | Screw | RD13844 | Handle Knob Bushing | RD15872 | Screw |
| RD 4812 | Screw | RD14061 | Drag Washers Retainer | RD15873 | Screw |
| RD 4829 | Screw | RD14249 | Line Roller Plate | RD15874 | Screw |
| RD 5880 | Screw | RD14250 | Line Roller Oil Cap | RD15875 | Handle Shaft Cover B |
| RD 5947 | Screw | RD14576 | Line Clip | RD15876 | Handle Shaft Cover |
| RD 6493 | Worm Bushing (rear) | RD14577 | Line Clip Spring | RD15877 | Handle Shaft |
| RD 6684 | Line Roller Spacer | RD14788 | Line Roller Support | RD15878 | Handle Shank Assembly |
| RD 7469 | Screw | RD14830 | Screw | RD15879 | Handle Knob |
| RD 7583 | E Lock | RD14832 | Spool Support A | RD15880 | Handle Knob I.D. Plate |
| RD 7787 | Bail Spring Guide A | RD14833 | Spool Support B | RD15881 | Handle Assembly |
| RD 7857 | Oscillating Pawl | RD14887 | Drag Click | RD15882 | Idle Gear B (small) |
| RD 8122 | Screw | RD14888 | Click Spring | RD15883 | Worm Shaft |
| RD 8167 | Handle Shaft Screw | RD15003 | Line Roller | RD15884 | Oscillating Guide A |
| RD 8759 | Click Pin | RD15350 | Line Safety Guard Spacer | RD15885 | Oscillating Guide B |
| RD 8850 | Roller Clutch Assembly | RD15351 | Line Safety Guard Washer | RD15887 | Handle Screw Cap |
| RD 8916 | Click Spring | RD15352 | Line Safety Guard | RD15888 | Spool Assembly |
| RD 9872 | Screw | RD15356 | Bail Trip Lever | RD15889 | Pinion Gear |
| RD 9908 | Drag Washer | RD15358 | Bail Spring Cover | RD15890 | Drive Gear |
| RD 9910 | Key Washer | RD15360 | Bail Hold Support Guard | RD15891 | Idle Gear B (large) |
| RD 9911 | Drag Washer | RD15365 | Worm Bushing (front) | RD15892 | Body |
| RD 9975 | Oscillating Slider Bushing | RD15366 | Bail Trip Strike | | |
| RD10184 | Line Roller Bushing | RD15367 | Anti-Reverse Lever | RD15384 | Spool Economizer S (accessory) |
| RD10313 | Bearing Spacer | RD15368 | Idle Gear | | |
| RD10367 | Anti-Reverse Cam | RD15372 | Oscillating Pawl Cover | | |
| RD10683 | Washer | RD15373 | Oscillating Slider | | |
| RD10752 | Bail Spring Guide A Support | RD15376 | Idle Gear B Shaft | PK 0142 | Line Roller Set |
| RD10753 | Bail Spring | RD15377 | Rear Protector | PK 0204 | Gear Set |
| RD11080 | Anti-Reverse Cam Spring | RD15378 | Worm Shaft Retainer | PK 0203 | Oscillation Set |
| RD11146 | Washer | RD15492 | Rotor Nut | PK 0081 | Bearing Set |
| RD12663 | Screw | RD15861 | Drag Knob | PK 0092 | Drag Clicker Set |